



BORDERlands

News from across the border

September 2011
Volume 14 Issue 3

Dear members, friends, supporters and all others interested in Borderlands,

I've been exploring my social worker freedoms and boundaries here at Borderlands, immersing myself in all things community development, social justice and environment. Eagerly, I proposed in the last newsletter, a kitchen table project, alas, I had no takers.

It became of interest to me to explore my own malaise and ambivalence towards activism. Am I a dissident or not? Or have I succumbed to the overt and covert invitations to an apolitical, individualistic and narrowly passionate life? Am I more individually oriented even than family oriented and what is my orientation towards community, both local and international?

In my time at Borderlands Cooperative I have come across themes, topics, conflicts and powerful emotions that I have previously ignored, shunned, delayed dealing with or been overwhelmed by. I've revisited an old book I have that has me sobbing each time I search through it: **Priceless: the Vanishing Beauty of a Fragile Planet** by Bradley Trevor Greive and Mitsuki Iwago. More recently, I've viewed and heard Sigourney Weaver's environmental award speech on <http://www.youtube.com/watch?v=p46RhKYb6fY> which was followed up by hearing a lecture from Aung San Suu Kyi on http://www.internationalpeaceandconflict.org/video/video/show?id=780588%3AVideo%3A498856&xgs=1&xg_source=msg_share_video. Also, in studying the social and political and critical theories while at university, I have been captivated, outraged, indignant, excited, touched and moved by what I've read, heard and seen, yet I'm also confronted by my ignorance and apathy. I'm surprised at how well I have been able to keep my passion for and sense of duty to earth, equality and human rights, something that affects me so powerfully, out of awareness, thus do little about it. I witness family violence, am told of my friend's frightening home invasion and sexual assault, and I'm overwhelmed by feelings of fear, anxiety, incompetence, helplessness and powerlessness; anathema to me.

I believe I avoid these unwanted and uncomfortable feelings by investing my time and energy into what doesn't invoke such feelings; I strive to become competent, to develop expertise, to protect myself from misfortune, I shop, I consume and end up climbing some ladder to the promised land that the rhetoric of neo-liberalism proffers. Yet animals that I am in awe of and so dearly love are still becoming endangered and extinct, forests and natural landscapes that both mesmerise and cause me to catch my breath with their sheer beauty are being destroyed, and our unacknowledged class system pits unequals against each other, resulting in oppression, division, disadvantage and loss of connection to all but the material.

I couldn't ask of you, what I haven't asked of myself! I'd like you to invite you to write about your reflections too, so please send them in! **Vicki O'Dwyer**

The only thing missing—really—is your regular visits... **Much love from all the 'regulars' at Borderlands and start with our AGM!!!! Jacques and Vicki and the team**

Borderlands Co-operative Ltd.
2 Minona Street, Hawthorn
P.O. Box 3079, Auburn 3123
Victoria AUSTRALIA
Tel: (03) 9819 3239 Fax: (03) 9819 3439
borders@borderlands.org.au

CALENDAR OF EVENTS

(More information on events inside)

- Sept 3-30 Art Exhibition p14
- Sept 21 International day of peace p13
- Sept 24 Wonga Walk p13
- Sept 28-29 VAYSAR Sports Carnival p11
- Oct 1 oases breakfast: Maryanne Confoy 'The Prophets: a timely conversation'
- Oct 8 Natural Cleaning Workshop p1
- Oct 8 oases Graduation Dinner
- Oct 17 Open-Kitchen Community Bake p10
- Nov 5 oases breakfast: Barrie Pittock 'Climate Change and Natural Law'
- Nov 11 Borderlands AGM p16
- Nov 12-13 Book Sale p15
- Dec 3 oases breakfast: oases participants presenting their ongoing work on their Masters Projects

Newsletter Deadlines

This newsletter is to inform you of all the Borderlands happenings. We need your input! Please send articles or details of your latest events etc. (preferably in electronic format) to the Editor at: borders@borderlands.org.au

Deadlines for the next issues are:

December Issue: 20th November

March Issue: 20th February



2012
Graduate Program in
Transformative Studies

Collaborative thinking

Purposeful dialogue

Mindful and

Heartfelt

Action

Be part of the most exciting and hope-giving educational opportunity to emerge in Australia for decades!

<http://www.oases.edu.au>

Phone: 03 9819 3502

Email: info@oases.edu.au

Come to a taster of the oases experience

[Oases Saturday Breakfasts](#)

BOOKINGS ESSENTIAL

Email: info@oases.edu.au



New Community Quarterly

NCQ is an Australian journal of community development with a history spanning 25 years. The website (www.newcq.org) provides information about the journal,

including subscriptions, contributions and back-issues as well as an archive of all previous publications by issue and subject.

To subscribe, contact Ben Leeman

benleeman@iinet.net.au

or call Borderlands: 9819 3239

Borderlands Newsletter

Volume 14 Issue 3 — September 2011

Published by Borderlands Cooperative

PO Box 3079, Auburn, 3123

Phone (03) 98193239 Fax (03) 98193429

borders@borderlands.org.au

www.borderlands.org.au

Editors: Vicky O'Dwyer, Jacques Boulet,

Layout & Design: Vicky O'Dwyer

Admin. and other support:

Martha Hills and others.

Please send articles, letters, poetry, creative writing, artwork for inclusion in the newsletter.

In this issue...

4. A layer cake of racist lies

6. Hurting without hitting

8. Peace building and 'warfare'

8. Is the food industry funding deceptive science

9. Len Puglesi deposits 3 important readers in the library

10. Open-Kitchen-Community-Bake

11. Said the leader of the free world (poem)

12. Manifesto (in English)

13. Pease is not something to wish for

15. Award announcement and Bookshop sale

16. AGM and election

17. Membership

Being a member of Borderlands is great.

Not only do you get to support one of the most down-to-earth, ecologically healthy, sustainably conscious, social theory drenched, community focused, participatory / democratically in-tune and generally wonderful place, you also get *membership goodies*.

Membership goodies include:

- Reduced subscription rates to New Community Quarterly (the only Community Development Journal in Australia)
- Variable discounts on lectures and workshops
- Cheaper rates to oases Breakfasts
- Use of Borderlands Spaces for your events, meetings, chats*
- Broadened borrowing opportunities at the 11,000 volumes (and counting) Borderlands Library.

Now is the time to renew your membership – or become a brand-shiny-new member (or shareholder) of this wonderful [independent network for holistic community activism, sustainability and action research](#).

We'd particularly love your membership if you have been receiving newsletters and correspondence from Borderlands for a while and haven't yet renewed your membership.

Please help keep Borderlands vibrant and active.

Membership is easy; just fill out the 'Membership, Shareholders and Subscribers Form' at the back of this newsletter and send / email it to us at:

borders@borderlands.org.au

Borderlands Cooperative
PO Box 3079,
Auburn VIC 3123.

QUOTE OF THE ISSUE

***There is no way to peace,
peace is the way.***

AJ Muste

I. **Borderlands Cooperative: Independent network for holistic community activism, sustainability and action research**

Be a part of a sustainable future!

By making a gift in your will to Borderlands Cooperative you are sustaining your values and ideals into the future.

Planned financial amounts can be donated for charitable purposes tax-free. And you do not need a great deal of wealth to make a difference. Every dollar helps to keep this non-profit organization alive and vibrant.

Your will is a very important document – it may be difficult to think of preparing it now – however, it protects your family and your assets for the future. A will gives you the opportunity to decide where your assets and possessions will go and how they are to be used. Preparing a legal will can potentially remove unnecessary stress, expense, and legal problems in future times.

However, we believe your will can do even more – it can also be your legacy, passing on not only physical assets, but also your values and ideals. A bequest is as simple as it is powerful; with a few words in your will, you can continue to be an advocate for community activism, healthy ecologically, sustainability and participatory democracy.

A bequest is a gift nominated in your will to one or more non-profit organizations. Your bequest can take any (or a combination) of the following forms:

- Cash
 - A percentage of the overall value of your estate
 - Retirement plan or life insurance beneficiary designation
 - Securities
- Personal property (artwork, jewelry, etc)

Due to the complexity of planned giving, we strongly suggest that you contact your tax advisor and/or legal advisor to begin the process. We encourage you to provide us with a copy of the relevant pages of your will, trust, or beneficiary designation form. All information will be kept in our secure files. You can send this information to us at:

Borderlands Cooperative

PO Box 3079

Auburn 3123

Tel: 03 9819 3239

Fax: 03 9819 3439

borders@borderlands.org.au



A layer cake of racist lies
A political scandal involving LA City Councilwoman Janice Hahn reveals how prevalent racism is in the US justice system.

[and 'we' should read this as a useful hint to look at our own 'systems'!!!! Ed.]

[Paul Rosenberg](#) Last Modified: 24 Jun 2011

"It may be racist, but it's true."

That, in essence, is how the National Republican Congressional Committee both denounced and defended what has been called the most offensive political advert of all time - an "attack ad" depicting Los Angeles City Councilwoman Janice Hahn as a demonic stripper surrounded by armed black thugs. In reality, it's just the opposite: not only racist, but false in more ways, at more levels, than most people even begin to imagine. Let's start with the immediate charges the Republicans invoke.

"Are House Democrats using the disgraceful web ad in an attempt to distract voters from Janice Hahn's reported ties to LA gang members?" a press release from the NRCC asks, linking to a three-year old TV report by the LA Fox affiliate, which contained accusations that Hahn - a candidate for Congress in a special election - funnelled city funds to active gang members. The TV report included damning accusations by said gang members, who were backed up by two disaffected police officers - Ryan Moreno and Chuck Garcia. But the report was completely debunked within weeks by a suburban Republican-leaning newspaper.

The report aired on April 30, 2008, and was picked to pieces by reporter Gene Maddaus in the *Daily Breeze* on May 14, 2008. Summarising his findings, Maddaus wrote: "A review of the Fox 11 News story found major flaws that undermine its central allegations. Most notably, records and interviews show that the gang intervention workers identified in the report have not received city funding. Additionally, a convicted rapist was wrongly identified as a gang intervention worker, and Hahn was mistakenly accused of providing funds directly to gang workers."

I co-wrote a follow-up piece, further exploring the spread of false accusations. Hahn's political enemies tried to milk the story for everything they could, but without success. The local Chamber of Commerce quickly distanced itself from one local leader who attacked Hahn, and a pillar of the local social service community blasted the TV report from stem to stern.

"We never hired anyone unless they were interviewed by the LAPD," said Howard Uller, the recently retired long-time head of the organisation through which the gang intervention program was run. "Anyone that was actively [involved in gang activity], we didn't hire." Fox 11 never responded to the debunking, and the real story behind the story became clear when the two accusing police officers lost a federal lawsuit alleging that they had been unfairly transferred out of the gang unit. Their attempt to try the case in the media failed. So, not only were charges against Hahn a lie, they were a cover-up as well: a cover-up for the real wrong-doing which involved in a broader, more basic realm of lies - the realm in which entire communities had been criminalised by police for the colour of their skin.

As the *Breeze* story explained, the conflict between Hahn and the two officers arose because she passed on community complaints against the two, whose behaviour reportedly undermined the purpose of the gang task force, which was intended to build trust and improve police-community relations as part of the department's shift away from a harshly adversarial approach, and toward the model of "community-based policing".

LAPD: 'an occupying army'

"The complaints that would come up the most were complaints about disrespect, even name calling," Hahn told the *Breeze*. "You would hear from the community that it was very difficult to work with LAPD when these two officers are doing X, Y and Z - being antagonising and disrespectful. It just kept coming up from everywhere." For the better part of a century, the LAPD had operated almost like an army - an occupying army in minority neighbourhoods, as author Joe Domanick explained in detail in his 1994 book, *To Protect and to Serve: The LAPD at War in the City of Dreams*, published in the aftermath of the 1992 Rodney King riots. A devastating critic of the LAPD at the time, Domanick has been quite supportive of the department's subsequent shift to a community-cooperative model over the past decade. But there are clearly still strong pockets of resistance.

In a September 2010 *LA Times* op-ed, Domanick wrote about current LAPD Chief Charlie Beck. "When he commanded the South Bureau - that sprawling section of black and latino LA - he told me: 'People here have started cooperating with us because we aren't just talking nice to them, we are building collateral. These folks ... have been marginalised for years. A lot of it is open dialogue, and treating them like equals and not like some lower species you're guarding at the zoo, which is definitely the way we [the LAPD] did it in the past.'" Moreno and Garcia were part of that past, refusing to follow orders from new leadership to embrace a more positive, more successful approach to crime-fighting. But there is much more to that past than just on-the-street policing attitudes. There is yet another, deeper and broader realm of racial lies to be exposed. For while the LAPD itself has changed remarkably, the larger criminal justice system that they are part of remains deeply divisive, dysfunctional and racist, as described by law professor Michelle Alexander in *The New Jim Crow: Mass Incarceration in the Age of Colorblindness*.

"The United States imprisons a larger percentage of its black population than South Africa did at the height of apartheid," Alexander writes. In Washington DC, our nation's capital, it is estimated that three out of four young black men (and nearly all of those in the poorest neighbourhoods) can expect to serve time in prison. Similar rates of incarceration can be found in black communities across America."

This is overwhelmingly a result of the "war on drugs", and the fact that blacks are stopped, arrested, tried, convicted and sentenced for drug crimes at rates far higher than whites, even though their levels of drug use and selling are virtually identical. The racial and political consequences are profound, Alexander explains. "Once a person is labelled a felon, he or she is ushered into a parallel universe in which discrimination, stigma, and exclusion are perfectly legal," he says.

The initial incarceration is only the beginning. In 1980, only one per cent of prisoners were there for parole violations, says Alexander. Twenty years later, that figure was up to 35 per cent - roughly as many people as the entire prison population in 1980. Of that figure, "two-thirds were returned for a technical violation such as missing appointments with a parole officer, failing to maintain employment, or failing a drug test. In this system, failing to cope well with one's exile status is treated as a crime". Blacks are not the only victims, of course. Hispanics suffer from a similar pattern. But after all the racial lies have been examined on their own, there still remains the way in which they infect the entire body politic.

For this, we turn to Christian Parenti's 1999 book *Lockdown America: Police and Prisons in the Age of Crisis*, which underscored how US society as a whole has become more punitive - beginning in the 1970s when the "crises of over-production, declining profits, and the domestic challenge of racial and class rebellion required a move away from the politics of the carrot toward the politics of the stick".

People of colour may have suffered first and most by an enormous margin, but the punitive, demonising logic involved has no stopping point, as we're now seeing the entire US middle class being threatened with immediate decimation and long-term extinction. The recognition may be late in dawning for some, but the logic is clear, as Martin Luther King explained more than 40 years ago: "You cannot keep a man down in a ditch unless you linger there with him."

It may be anti-racist. But it's true.

**Paul Rosenberg is the Senior Editor of Random Length News, a bi-weekly alternative community newspaper.
The views expressed in this article are the author's own and do not necessarily represent Al Jazeera's editorial policy.**



Hurting Without Hitting: non-physical contact forms of abuse

Abbreviated from Laurie McKinnon, Australian Domestic & Family Violence Clearinghouse, Stakeholder paper 4, February 2008

Surely, yelling at and berating a child hardly equates with breaking that child's leg or arm. Surely, injuring one's partner hardly equates with calling him or her names. Well, surely it does!

Non-physical contact (NPC) abuse can be difficult to identify as it leaves no visible injury and its victims are less likely to request help. It is a covert, subtle, insidious, and easily disguised as helpful or inadvertent. It includes ignoring or discounting the target person's needs and negatively labelling the target person in such a way that denotes them as being of less worth, of being more difficult, unattractive or undesirable than others. Specifically, it includes insults, ridicule, shows of contempt (in tone of voice or facial expression), verbal denigration, threats of or actual abandonment for periods of time, threats, bullying, name calling, locking someone up, unfavourable comparisons to others, disparagement of one's success, humiliation, put-downs, screaming "I wish you were dead, I wish you had never been born", restrictions of freedom and constant surveillance, with controlling factors predictive of intimate partner physical violence.

NPC works insidiously. It is often a component of physical and sexual abuse, and a core component of child abuse and domestic violence. The long term effects can be as devastating, if not more so, than for physical abuse. Its coexistence with physical abuse multiplies the negative impact of the physical abuse.

Research has shown that there are long-term effects of NPC abuse that includes physical and mental illness and behavioural and relationship consequences. For children, even witnessing such abuse, much less receiving it directly, is experienced as extremely traumatic. The result being more health problems, higher levels of depression, more attention difficulties, higher rates of internalising and externalising behaviour problems, and less social and cognitive competence for children exposed to such violence.

Emotional abuse during adolescence is one of the serious risk factors for substance abuse. Once grown up, children who have been emotionally abused continue to experience problems in terms of their physical health, mental health and adult relationships. Childhood emotional abuse within the family is a clear precipitant for later adult depression. Emotional abuse leaves children with a sense of shame and worthlessness and with an *alexithymia* that is carried forward into adulthood. Psychological abuse is a significant predictor of posttraumatic stress disorder in adult women, more so than physical abuse.

Verbal abuse takes the form of an event, identified in tone and personalised language. Contrast "YOU have NOT done your homework AGAIN", stated with emphasis on the capitalised letters, with a neutral statement such as "The homework is not done".

As part of an ongoing process however, hostile verbal and nonverbal behaviour it is likely to adversely affect the target person's emotional development and behaviour. Commonly referred to as *emotional abuse*, it includes acts of: ongoing verbal abuse including explosive outbursts of anger; discrediting the other person's reputation – spreading negative rumours; threats of abandonment (or actual periods of abandonment); threats to harm the target person or their family members or pets; inducing terror or fear by threatening to place the target person in a dangerous environment or forcing them to watch violence toward another person or animal; inducing terror or fear in a child by harming or aggressive than females, and when faced with verbal abuse, women experience greater emotional distress as well as greater vulnerability to the long-term negative consequences.

threatening to harm the child's parent; corrupting or exploiting the target person by inducing them (often as a result of threatening to harm their children or pets) to commit a crime or, as in the case of a child, permitting them to use alcohol, drugs or see pornography; restricting the target person from normal contact with other people; refusing to acknowledge the other person's presence; withholding of necessary information; 'the silent treatment' – refusing to communicate for extended periods; ignoring the other person's attempts to interact, failure to confirm the other person's needs or feelings; and failure to show appropriate affection or love. Emotional abuse is directed by a more powerful person towards a dependent target, and it impedes the less powerful person's emotional development and wellbeing and increases insecurity, loneliness and isolation in the target person.

By including intimidation, threats, manipulation, trickery, and a relentless effort to impose the perpetrators definition on to the victim, the abuse is termed *psychological abuse*; over time it has the effect of eroding or destroying the target person's psychological sense of self. Often the perpetrator will have greater power in the relationship and a social network outside of the relationship that holds them in esteem while the target person is more isolated. Also, the perpetrator will deny, minimise, justify the psychological injury inflicted in such a way as to render the target person confused and distrustful of their own perceptions to the point of becoming self-blaming. The target person's response will be labelled as further evidence of their pathology or inadequateness.

A 'scapegoated' child will be targeted by one or both parents, and even siblings, and defined as 'bad', 'sick', 'problematic', 'odd' or inadequate in some way. The child's emotions are invalidated often by minimising the child's distress and interpreting the child's response to the hostility as further evidence of something being wrong with the child. Children in these circumstances learn to restrict emotional expression, resulting in chronic emotional inhibition. This is a significant predictor of psychological distress including depression and anxiety symptoms.

In intimate partner relationships, psychological abuse is characterised by an ongoing pattern of domination, oppression, unrealistic expectations, verbal attacking or silent withdrawal. Through repeated episodes over time, the perpetrator undermines the target person's sense of self through emotional abuse strategies: attacking their personhood by ignoring, demeaning, belittling, undermining self-worth, ridiculing traits and criticising behaviour; defining the target persons reality by making them question their own perceptions and judgement; and isolating them by controlling the contact with outside world and support systems. The target person, under the abuser's domination, comes to believe that they are inadequate and that the abuse is warranted and hide the situation for fear of being labelled. Other psychologically abusive behaviours include creation of fear, isolation, monopolisation, economic abuse, degradation, rigid sex role expectations, psychological destabilisation, emotional or interpersonal withholding and contingent expressions of love. Even in relationships in which men and women are abusive towards each other, males are more verbally abusive. NPC is a serious issue. Victims of emotional and psychological abuse experience debilitating long term consequences. Even long after the abuse ceases, the victimised person's health, mental health and social and psychological functioning can be compromised. In some cases, these effects can be even greater than the effects of physical abuse and some of the effects attributed to physical abuse may be due to effects of simultaneous psychological abuse.

Centre Against Sexual Assault Hotline	1800 806 292
Child Protection	1800 135 135 / 131 278
Family Violence 24 Hour Crisis Line	1800 015 188 / 9458 5788
Family Relationship Advice	1800 0505 321
Kids Helpline	1800 551 800
Men's Line	1300 789 978
Men's referral service	1300 280 737
Parent line	132 289
Women's domestic violence	1800 015 188 / 9373 0123
Women's information referral service	1300 134 130
Women's Legal Service	1800 133 302 / 9642 0877
Women's Housing	9412 6868
Youth Support	1800 800 531 / 9611 2411



'Peace building' and Warfare

Cardijn Community International (CCI) feels that while efforts should be taken by one and all to avert destruction of humanity and nature through warfare, there should be an all out effort in 'peace building' so that the whole of humanity can live in harmony with one another and nature; peace education also presupposes ecological education.

The Vatican II document [Pastoral Constitution On The Church In The Modern World — Gaudium et Spes](#) speaks elaborately on 'peace', a part of which is reproduced here:

"78. Peace is not merely the absence of war; nor can it be reduced solely to the maintenance of a balance of power between enemies; nor is it brought about by dictatorship. Instead, it is rightly and appropriately called an enterprise of justice. Peace results from that order structured into human society by its divine Founder, and actualized by men as they thirst after ever greater justice. The common good of humanity finds its ultimate meaning in the eternal law. But since the concrete demands of this common good are constantly changing as time goes on, peace is never attained once and for all, but must be built up ceaselessly. Moreover, since the human will is unsteady and wounded by sin, the achievement of peace requires a constant mastering of passions and the vigilance of lawful authority.

But this is not enough. This peace on earth cannot be obtained unless personal well-being is safeguarded and men freely and trustingly share with one another the riches of

their inner spirits and their talents. A firm determination to respect other men and peoples and their dignity, as well as the studied practice of brotherhood is absolutely necessary for the establishment of peace. Hence peace is likewise the fruit of love, which goes beyond what justice can provide." (It must be noted that Cardinal Cardijn whose legacy CCI wants to promote, was a driving force behind drafting this document at the Vatican II).

On this Pentecost, let us invoke the Holy Spirit to fill humanity with 'peace' and ability to engage in 'peace education towards sustainable development'.



Is the Food Industry Funding Deceptive Science?

by [Angela B.](#) June 23, 2011

Read more: <http://www.care2.com/causes/is-the-food-industry-funding-deceptive-science.html#ixzzIQFL8TIHO>

We have heard a lot in recent years about the questionable or sometimes downright unethical corporate business practices of "Big Pharma" and "Big Tobacco"—now, even "Big Soda." But what about "Big Food?" Well, according to [recent reports](#), some experts are convinced the corporate food and agribusiness industry is also in need of some watchdogging.

According to [ABC news](#), premier scientific researchers, such as David Allison of the University of Alabama, are increasingly being funded by the big names in corporate food, and their financial ties to such companies as Coca Cola, Kraft, McDonald's, Mars and Nabisco (just to name a few) may be threatening their objectivity: "Critics say Allison is part of a concerted effort by big food to co-opt scientists not only by funding their research but by offering them lucrative speaking and consulting deals, in an effort to confuse U.S. families about the health effects of popular food products. Such tactics, critics say, are similar to those once used by Big Tobacco."

In a recent [commentary](#) published in the [Journal of the American Medical Association](#) (JAMA), researchers warn that "the food and beverage industry has created or funded front groups reminiscent of the tobacco institute that give the appearance of grassroots support."

One such group the JAMA writers cite is the [Center for Consumer Freedom](#), an organization which [in truth](#) was founded by a \$600,000 gift from [big tobacco](#) and is funded by powerful agribusinesses (as well as America's most prominent tobacco and alcohol barons). The center is known for [maliciously opposing](#) public health and advocacy groups such as [PETA](#), [Mother's Against Drunk Driving](#), [Center for Science in the Public Interest](#), The U.S. [Center for Disease Control and Prevention](#) and the [Physicians Committee for Responsible Medicine](#).

From the CCF [website](#):

"A growing cabal of activists has meddled in Americans lives in recent years. They include self-anointed 'food police,' health campaigners, trial lawyers, personal-finance do-gooders, animal-rights misanthropes, and meddling bureaucrats. Their common denominator? They all claim to know 'what's best for you.' In reality, they're eroding our basic freedoms—the freedom to buy what we want, eat what we want, drink what we want, and raise our children as we see fit."

The question of unbiased science in the food industry and its impact on our health has also been explored in such recent blogs-gone-books as Michele Simon's [Appetite for Profit: How the Food Industry Undermines Our Health and How to Fight Back](#) and Marion Nestle's [Food Politics: How the Food Industry Influences Nutrition, and Health](#).

Read more: <http://www.care2.com/causes/is-the-food-industry-funding-deceptive-science.html#ixzzIQFL8TIHO>

Len Puglisi deposits his three Readers in the Borderlands Co-op and Social Policy Connections libraries

Len is a former solicitor (10 years), urban planner with state and local governments (25 years) and now an urban environmental writer.

Over a number of years, our member and frequent contributor, Len Puglisi, has made extensive collections of articles, news items, talks, book extracts and other written papers and has now placed the assembled materials in the two libraries. They have been produced as three '**Readers**' and are available as hard copies in the above libraries, or on-line as described below. Len's purpose in assembling the materials in the Readers is to offer researchers and others an easy and focussed way into the topics covered. The broad topic areas are as follows:

Reader No.1 (R.1 assembled in two sections and collected up to 2006): '*Frugality and Footprint Views Converge to Question the Consumer Culture*'. The collection should appeal to anyone looking at issues of our consumer society, whether starting from a social justice or a natural sciences base – and both. As Len explains in his sub-heading, '*... Starting from different positions – cultural, religious or scientific – frugality urgings and footprint analyses ask the confronting question: Whatever the joys and achievements of the prevailing wealth, population and growth ethos, is there an urgent need to scale down to the limitations of the Earth?*' Contrary positions on a wide range of topics are assembled, including personal stories of lives lived carefully, and robust arguments both for going on the way we are versus criticisms from various religious, philosophical and scientific perspectives.

(Also available on-line from Len.)

Reader No.2 (R.2 '*Urban Reader*' - a wide-ranging collection of materials on urban issues both commonplace and controversial, assembled to 2010.) His focus is a statement by Thomas Berry: '*Because we live in a man-made world, the challenge is how to keep... immediacy with the natural world and to establish a traditional wisdom that deepens our understanding of the experience.*' With '*the urban*' dimensions of society now privileged in many quarters as '*triumphant*', Len's collection is intended to allow an exploration of the pros and cons of current styles of city living.

(The full Reader is **not** available on-line from Len, except for any of his published papers including his two '*book-end*' papers, '*Nature's home or growth engine: 'Whereto the city?' and 'Nature and Society, Nature and City.'*)

Reader No.3 (R.3 Len's latest collection, assembled to June 2011.)

This Reader covers:

Ecology (Nature) and Religion;

Society (Cities) and Environment;

Macro/Micro Alternatives to Mainstream and **the Sacred**

Recognising that the sacred is a contested notion and carries ambiguous meanings, the collection does not commence from a specifically religious or non-religious perspective. Nevertheless, three themes guide the extracts in the Reader:

'At its most profound level, the ecological crisis is a spiritual crisis';

'... the challenge is to keep ... immediacy with the natural world';

'Economic growth forever is not possible on a finite, sacred planet'.

(Also available on-line from Len.)

Notes:

Len welcomes approaches to him regarding any of these materials or their full text.

He can be reached on moral@alphalink.com.au or by phone on (03) 9803 8216.

The Readers are available in the Borderlands Co-operative library, Augustine Centre, 2 Minona Street, Hawthorn, 3122 – Tel 9819 3239 and in the Social Policy Connections/Yarra institutes library, 34 Bedford Street, Box Hill, 3128 – Tel 9890 1077.



Open Kitchen - *Community Bake*

Monday afternoons 1-3pm 17th October – 28th November

Alamein Neighbourhood & Learning Centre

49 Ashburn Grove, Ashburton 3147

Welcome to the Open-Kitchen-Community-Bake, I'm glad I've caught you!

What is all the fuss? This is a social movement designed to get people together who do and don't like to cook and want to cook with the support, ideas sharing, companionship, laughter and skills and tips of others. The goal is to give you free time from cooking, as well as creating local social connections.

Open kitchen community Bake is big batch cooking, where local people of all skills and abilities get together once a week and each cook a big batch recipe. Each participant brings their own ingredients, cooking equipment and containers to take your booty home in. The batch gets divvied up amongst all the participants at the end of the session, and everyone goes home with a few nights worth of home-cooked dinners.

It appeals to those of you who would like company or support while cooking; those who don't like cooking and want to draw on the motivation of others, singles, single parents, parents of big families, newly moved out of home people or people who are busy caring and supporting others, such as elderly parents or children with disabilities and people who need practical support to cook due to disability or injury.

If someone prefers to cook the night before and bring in their pre-prepared batch, they would be most welcome to do so, as they can then benefit from the conversation and support they offer others

There should be enough people present to help distract any youngsters from hot ovens. Interested participants make and share a favourite, cheap or challenging recipes from hearty soups, to casseroles, spaghetti bolognese or macaroni & cheese.

When group members are unwell or otherwise occupied (giving birth or injured for example), the community bakers can make sure the food goes a little further and deliver a home package, thus covering one another's backs.

Please contact us at Alamein Neighbourhood and Learning Centre 9885 9401,

or Borderlands 9819 3239 so that we can speak with you to ensure that

your particular needs are catered for and that there is enough equipment.

For example, you may have diabetes, not have a blender or need some transport to get to and from the group. You may simply like to volunteer to help out, and you will be most welcome too.

Vicky O'Dwyer



Said the Leader of the Free World

Tonight

My dear children

I will come to burn your village

Your homes

Your schools

I will kill old people

And women of all ages

As you watch

then perhaps I will begin
killing you

My dear children

But I assure you

I do this in the name of
peace and love

Tonight

I will wound some of you

Then I will wound others

I will leave some of them blind

Others lame

And history will absolve me

For when your village disappears

I will reconstruct the shrines

Where you worshipped

History may even forget that tonight

I determined who would live

And who would die



VAYSAR Sports Carnival for aboriginal kids

We Need Volunteers to monitor sports oval boundaries, assist with entertainment providers, and encourage kids to stay in queues, cooking BBQ's, time keeping sports games and general helping.

Its on **September 28th and 29th**, and even if you can only volunteer for one day that would be a great help!!!!

Jem Bamford
Office & Volunteer Coordinator

9419 3613

www.antarvictoria.org.au



Green Renters News

DIY Natural Cleaning Workshop

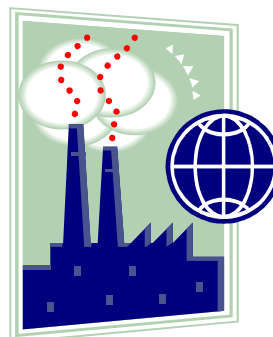
October 8th, 2011

10:00 AM through 11:30 AM

Creeds Farm Living and Learning Centre
2 Snugburgh Way
Epping North, Australia

03 8300 0233

www.greenrenters.org



By Marjorie Agosin, translated by Betty Jean Craigie

Manifesto by the youthful protesters in Spain ...

We are ordinary people. We are like you: people, who get up every morning to study, work or find a job, people who have family and friends. People, who work hard every day to provide a better future for those around us.

Some of us consider ourselves progressive, others conservative. Some of us are believers, some not. Some of us have clearly defined ideologies, others are apolitical, but we are all concerned and angry about the political, economic, and social outlook which we see around us: corruption among politicians, businessmen, bankers, leaving us helpless, without a voice.

This situation has become normal, a daily suffering, without hope. But if we join forces, we can change it. It's time to change things, time to build a better society together. Therefore, we strongly argue that:

- The priorities of any advanced society must be equality, progress, solidarity, freedom of culture, sustainability and development, welfare and people's happiness.
- These are inalienable truths that we should abide by in our society: the right to housing, employment, culture, health, education, political participation, free personal development, and consumer rights for a healthy and happy life.
- The current status of our government and economic system does not take care of these rights, and in many ways is an obstacle to human progress.
- Democracy belongs to the people (demos = people, krátos = government) which means that government is made of every one of us. However, in Spain most of the political class does not even listen to us. Politicians should be bringing our voice to the institutions, facilitating the political participation of citizens through direct channels that provide the greatest benefit to the wider society, not to get rich and prosper at our expense, attending only to the dictatorship of major economic powers and holding them in power through a bipartidism headed by the immovable acronym PP & PSOE.
- Lust for power and its accumulation in only a few; create inequality, tension and injustice, which leads to violence, which we reject. The obsolete and unnatural economic model fuels the social machinery in a growing spiral that consumes itself by enriching a few and sends into poverty the rest. Until the collapse.
- The will and purpose of the current system is the accumulation of money, not regarding efficiency and the welfare of society. Wasting resources, destroying the planet, creating unemployment and unhappy consumers.
- Citizens are the gears of a machine designed to enrich a minority which does not regard our needs. We are anonymous, but without us none of this would exist, because we move the world.
- If as a society we learn to not trust our future to an abstract economy, which never returns benefits for the most, we can eliminate the abuse that we are all suffering.
- We need an ethical revolution. Instead of placing money above human beings, we shall put it back to our service. We are people, not products. I am not a product of what I buy, why I buy and who I buy from.

For all of the above, I am outraged.

I think I can change it.

I think I can help.

I know that together we can. I think I can help.

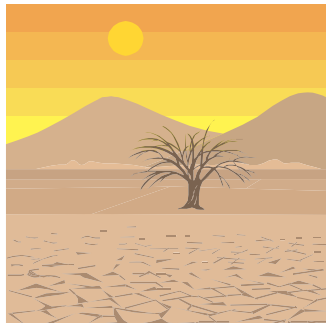
I know that together we can.



Listening to the Land: Spring (Wonga Walk)

The Land is Sacred. The Land inspires us. The Land's beauty and majesty moves us in awe, wonder and reverence. Yet we often treat the Land as an object instead of an integral part of ourselves. 'Listening to the Land' is an initiative of the Mornington Peninsula Interfaith Network, seeking to bring people from all religious and spiritual backgrounds together to connect or reconnect with the Land and to be moved to care for the Land.

Our Spring 'Listening to the Land' programme will be held at Arthur's Seat (Wonga) and includes an introductory talk, walking meditation and a shared lunch. The walk and meditation will be led by Gunditjamarra Elder, Uncle Lionel Lach.



Look forward to seeing you there – sunshine or rain. The event is by donation.

Venue: Wonga Walk - OT Dam, Arthurs Seat Road, Arthurs Seat, Mornington Peninsula

Date: Saturday 24th September 2011

Time: 11:00am–2pm (Lunch @ 1pm BYO Vegetarian to share)

Meeting Point: Car Park @ Arthur's Seat Road (see flyer)

More information: Reverend Hans Christiansen 0406 243 783

Peace is not something you wish for;

It's something you make, Something you do, Something you are, And something you give away. -- Robert Fulghum

Invitation to participation in the activities of The Centre for Non-Violence

Inspiration, Reflection and Being in Each Other's Presence

We are recommending opportunities to meet, plot, plan and intervene for a much more peaceful world.

The Centre for Non-Violence is a bottom-up/grass roots movement towards peace internally and interpersonally, within our most intimate to least intimate relationships, and within and between states, nations and countries.

We request your involvement, in any shape or form, from ideas sharing, planning or hands on project work or coffee making. Let Vicki at Borderlands (9819 3239) know if either a Monday 7-9pm or Tuesday 12-2, monthly meeting at Borderlands suits you.... Leave your details and preferred time and Vicki, Brigitte or Lyn will be in contact.



For International Day of Peace - 21st September 2011

We appeal to you to undertake your own pro-peace consciousness raising: look for similarities between yourself and a person you are having some difficulty with; notice when peace is and isn't present in yourself - try to describe its sensations, urges, feelings, thoughts and imaginings; question your own or societies non-peaceful practices, ideologies and beliefs; or meander through <http://www.peaceoneday.org/en/about/features/peace-one-day-on-youtube>.

Brigitte Kupfer is a new member of the Borderlands Cooperative and offered a poem.

It Is I Who Must Begin

It is I who must begin.
 Once I begin, once I try --
 here and now,
 right where I am,
 not excusing myself
 by saying things
 would be easier elsewhere,
 without grand speeches and
 ostentatious gestures,
 but all the more persistently
 -- to live in harmony
 with the "voice of Being," as I
 understand it within myself
 -- as soon as I begin that,
 I suddenly discover,
 to my surprise, that
 I am neither the only one,
 nor the first,
 nor the most important one
 to have set out
 upon that road.

Whether all is really lost
 or not depends entirely on
 whether or not I am lost.

~ Vaclav Havel ~

*(Teaching With Fire, ed. by S.M. Intrator
 and M. Scribner)*

Christine Ewert

Old & New

Funny Situations

Drawings, Paintings & Portraits

Exhibition: 3rd September - 30th September

Augustine Centre Gallery

2 Minona Street, Hawthorn

03 9819 2844

**Gallery hours in the hall: Tue - Fri: 9.30am
 to 4.30pm**



ANNOUNCEMENT OF AWARD

[Borderlands is really happy to let all readers know about this award given to the Cambodian counterpart of our partners, *Community Links with Cambodia*]

It was with great pleasure that Ms Saman BUTH, of Phnom Penh, Cambodia director@clacambodia.org was awarded with the Women's World Summit Foundation's **Prize for Women's Creativity in Rural Life 2011**. Saman was nominated by Ms Enza Santangelo, President of the Community Links with Cambodia Melbourne, Executive Committee, in Australia.

Saman was among 10 Laureates selected by the WWSF International Jury this year. Her work is profiled in the WWSF Global Newsletter "**Empowering women and children**", along with the other 9 laureates in 2011. Saman was awarded US\$ 1000 to encourage her to continue her creative work and development projects in favour of the rural population in her region.

With warm regards,

Elly Pradervand, WWSF Founder/Executive Director

Dear Enza and friends,

Thank you very much for congratulation me with the award.

I am very happy hearing that I was one of laureate of WWSF Prize, and my tear come out.

I can have this day as I have strong support, especially from you and our friends in Australia.

I never hope I can have award like that. I would like millions of word to thank to you and our friends.

You all work very hard to help me and CLA. This award is from all of hard work that I and you all work together to improve and protect the life and rights of poor and marginalised people. It is our award, not just for myself.

Even if I am now not in good health, but this make my heart stronger to keep stand up together with you all to continue to help people they really need our help and assistance.

All my best love to you and our friends.

Lots of love

Saman



Borderlands Book Sale

You are invited to our Borderlands used-book sale (starting Friday evening the 11th after the AGM)

9.30am - 6pm Saturday 12th November

9.30am - 5pm Sunday 13th November

**In the John Alexander Room at the Augustine Centre
Great books, great discounts, well worth a look**



AGM AGM AGM AGM AGM

5.30pm November 11th 2011

Borderlands, 2 Minona Street, Hawthorn (Melways 45 E11)

Join us in the Borderlands Library for our AGM which we'll make as quick and painless as we possibly can, then you can be amongst the first to peruse the books available at our book sale on 12th and 13th November.

Please use this form to nominate for election to the Board and return to the Borderlands Office:

PO Box 3079, Auburn 3123

By Monday the 20th of November, 2010 (OR Bring on the day)

Nomination Form for Election of Directors

Our Board of Directors meets regularly and is drawn from the membership of Borderlands Cooperative Ltd. The Board has the overall responsibility for the administration and developmental direction of the Cooperative.

I wish to nominate (please print):
for election to the Board of Borderlands Cooperative Ltd.

Name (Please print)

Signature of person nominating:.....

Date:.....

To be filled in by the person being nominated:

I accept the nomination to stand for election to the Board of Borderlands Cooperative Ltd. and, if elected, I agree to abide by the rules of the Cooperative and to fulfil all duties as specified in the Cooperative Rules.

Name (Please print):

Date:

BORDERLANDS COOPERATIVE

Please return your completed form to Borderlands Cooperative, PO Box 3079, AUBURN 3123

1. Your details

Name _____

Address _____

Suburb _____ State _____ Postcode _____

Email address _____

Phone _____ Mobile _____

Use this form to

- Become a member, shareholder or subscriber
- Renew your membership
- Made a donation

2. Membership/Shareholder. The primary activities of Borderlands are to provide consulting services, meeting spaces and to contribute to supporting ecological, social and cultural regeneration and sustainability through collaborative endeavors and critical inquiry.

All members of the Cooperative are required to be active members.

Active membership requires:

- For members payment of annual memberships fees **OR**
- For shareholders
 - ◊ Participate in at least one activity each financial year such as a meeting, or use the space or other resources of the cooperative **AND/OR**
 - ◊ Make a donation to further the activities of the cooperative

I wish to become a member or renew my membership by:

Payment of membership fee of \$_____ [Note: All memberships are due

Join
\$25 yearly subscription

for renewal on 1 September. For partial year memberships, see box at right.]

Purchase of _____ share(s) in the Cooperative at \$100 each.

Donation of _____

Total enclosed as cheque or money order _____

I would like to receive the newsletter by email post

(NEW MEMBERS ONLY) I agree to become an active member of the cooperative.

Signature _____ Date _____

Tick here if you **don't** want to receive emails on events or issues.

3. Newsletter only I do not wish to become a member or shareholder but would like to receive the newsletter.

Free by email \$10 by post

For office use only

Receipt number

Database updated

Date filed
Initials _____

Toil with us at Borderlands!

Project work:

This is a general open call to researchers, social workers and community workers (or other appropriately qualified and experienced people) interested and able to do project work; to seek out potential projects and write submissions - work with us at Borderlands either singly or as a team.

With Borderlands involvement, supervision and support, 20% of project income goes right back into the cooperative, so that we can pay the rent, keep computers updated, pay for general office upkeep, sustain the active work of holistic community activism, sustainability and action research going into the future.

Borderlands is a non-profit cooperative, so if you see potential projects or are thinking about writing a submission, come join us in a supportive and supervised office - either give us a call or drop in to say hello. New faces are always welcome. **If you have other skills, knowledge, wisdom, understanding, ideas and would like to be a part of Borderlands, please [contact us](#) and get involved!**

Ph: 03 9819 3239 E: borders@borderlands.org.au



PO BOX 3079 Auburn VIC 3123

Ph: 03-9819 3239 fax: 03-9819 3439